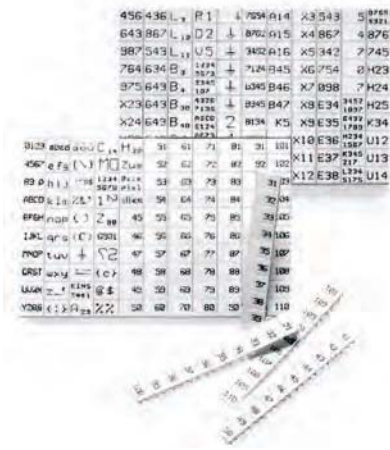


Marking accessories

Marking plates

• For *wieplot* BASIC / *wieplot* 500 plotter system



| Description | Type | Part No. | Std. Pack |
|------------------|--------------------|----------------|------------------|
| Unmarked | | | |
| Width 4 x 5 mm | 100 tags per plate | 9075/4/10/10 | Z4.243.2053.0 10 |
| Width 5 x 8.3 mm | 110 tags per plate | 9075 A/5/10/11 | Z4.242.5053.0 10 |
| Width 5 x 14 mm | 60 tags per plate | 9705 AL/5/10/6 | Z4.242.5153.0 10 |
| Width 6 x 8.3 mm | 110 tags per plate | 9075 A/6/10/11 | Z4.242.6053.0 10 |
| Width 6 x 14 mm | 60 tags per plate | 9705 AL/6/10/6 | Z4.242.6353.0 10 |
| Width 8 x 8.3 mm | 70 tags per plate | 9075 A/8/10/7 | Z4.242.8053.0 10 |

Single marking tag All blocks/ 5 mm wide and larger

*) Custom marking upon request



| Description | Type | Part No. | Std. Pack |
|------------------|-------------|---------------|-----------|
| Unmarked | | | |
| Width 5 x 8.3 mm | 9705 A | 04.242.0850.0 | 500 |
| Width 5 x 14 mm | 9705 AL | 04.242.1553.0 | 500 |
| Marked | | | |
| Width 5 x 8.3 mm | 9705 AB *) | 04.842.0850.0 | 500 |
| Width 5 x 14 mm | 9705 ALB *) | 04.842.1553.0 | 500 |

Marking strips 1.5 mm²/4 mm wide

*) Custom marking upon request



| Description | Type | Part No. | Std. Pack |
|------------------------------------------------|-----------------|---------------|-----------|
| Marking strips for center block marking | | | |
| Unmarked | 9705 A 4/10 | 04.243.2053.0 | 100 |
| Marked | 9705 A 4/10 B*) | 04.843.2053.0 | 25 |
| Marking strips for outer block marking | | | |
| Marked | 9705 A 4/10/10 | Z4.243.2053.0 | 10 |

Marking strips 2.5 mm²/5 mm wide

*) Custom marking upon request



| Description | Type | Part No. | Std. Pack |
|-----------------------------------|--------------------------|---------------|-----------|
| Unmarked | | | |
| | 9705 A/5/10 | 04.242.5053.0 | 25 |
| Marked | | | |
| 1 - 9 | 9705A/5/9 B 1 - 9 | 04.842.4953.0 | 25 |
| *) | 9705A/5/10 B | 04.842.5053.0 | 25 |
| 1 - 10 | 9705A/5/10 B 1 - 10 | 04.845.0153.0 | 25 |
| 11 - 20 | 9705A/5/10 B 11 - 20 | 04.845.0253.0 | 25 |
| 21 - 30 | 9705A/5/10 B 21 - 30 | 04.845.0353.0 | 25 |
| 31 - 40 | 9705A/5/10 B 31 - 40 | 04.845.0453.0 | 25 |
| 41 - 50 | 9705A/5/10 B 41 - 50 | 04.845.0553.0 | 25 |
| 51 - 60 | 9705A/5/10 B 51 - 60 | 04.845.0653.0 | 25 |
| 61 - 70 | 9705A/5/10 B 61 - 70 | 04.845.0753.0 | 25 |
| 71 - 80 | 9705A/5/10 B 71 - 80 | 04.845.0853.0 | 25 |
| 81 - 90 | 9705A/5/10 B 81 - 90 | 04.845.0953.0 | 25 |
| 91 - 100 | 9705A/5/10 B 91 - 100 | 04.845.1053.0 | 25 |
| ⊕ (10x) | 9705A/5/10B SLZ | 04.855.0053.0 | 25 |
| ⊖ (10x) | 9705A/5/10B ERDZ | 04.855.0153.0 | 25 |
| + | 9705A/5/10 B + | 04.855.0253.0 | 25 |
| - | 9705A/5/10 B - | 04.855.0353.0 | 25 |
| L1 (10x) | 9705A/5/10B L1 | 04.855.0453.0 | 25 |
| L2 (10x) | 9705A/5/10B L2 | 04.855.0553.0 | 25 |
| L3 (10x) | 9705A/5/10B L3 | 04.855.0653.0 | 25 |
| PE (10x) | 9705A/5/10B PE | 04.855.0753.0 | 25 |
| SL (10x) | 9705A/5/10B SL | 04.855.3153.0 | 25 |
| N (10x) | 9705A/5/10B N | 04.855.3253.0 | 25 |
| F1 (10x) | 9705A/5/10B F1 | 04.855.0953.0 | 25 |
| F2 (10x) | 9705A/5/10B F2 | 04.855.1053.0 | 25 |
| L1,L2,L3,N,PE (10x) | 9705A/5/10B L1L2L3NPE... | 04.855.0853.0 | 25 |
| With enlarged marking area | 9705 AL/5/10 | 04.242.5153.0 | 25 |